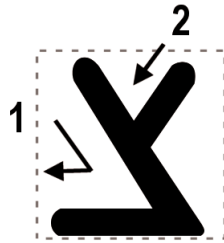


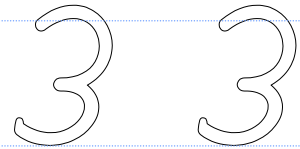
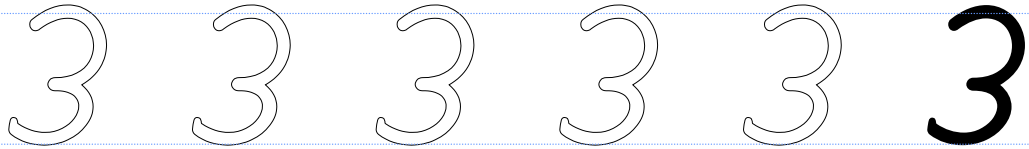
Tsade Writing Practice

“Ts” as in nuts



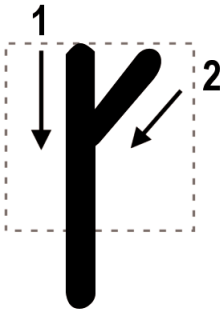
Tsade Writing Practice

“Ts” as in nuts



Final Tsade Writing Practice

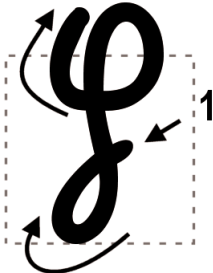
“Ts” as in nuts



Handwriting practice lines for the final Tsade character. The page features four rows of horizontal lines. The first row contains five Tsade characters: four hollow outlines for tracing and one solid black character. The second row contains three hollow Tsade outlines. The third row contains two hollow Tsade outlines. The fourth row contains one hollow Tsade outline. A vertical pink line is positioned on the right side of the page.

Final Tsade Writing Practice

“Ts” as in nuts



Handwriting practice lines for the final Tsade letter. Each line consists of a top blue dotted line, a middle blue dotted line, and a bottom blue dotted line. A vertical red line is on the right side of the page.

Row 1: Five hollow outline letters followed by one solid black letter.

Row 2: Three hollow outline letters.

Row 3: Two hollow outline letters.

Row 4: One hollow outline letter.