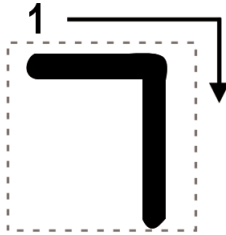


Resh Writing Practice

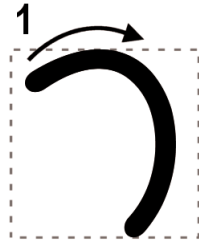
“R” as in rain



Handwriting practice lines for the letter Resh. The first row contains six letters: five hollow outlines for tracing and one solid black letter. The second row contains three hollow outlines. The third row contains two hollow outlines. The fourth row contains one hollow outline. The remaining three rows are empty for independent practice. A vertical pink line is on the right side of the page.

Resh Writing Practice

“R” as in *rain*



Handwriting practice lines for the letter 'R'. The page features four sets of horizontal lines (top, middle, bottom) with a vertical red line on the right side. The first set of lines contains six 'R' characters: five are hollow outlines and the sixth is a solid black letter. The second set of lines contains three hollow 'R' outlines. The third set of lines contains two hollow 'R' outlines. The fourth set of lines contains one hollow 'R' outline. The remaining space in each set of lines is blank for independent practice.