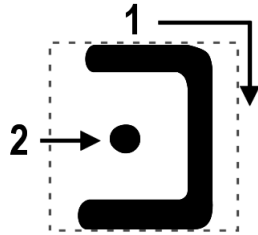


Kaf Writing Practice

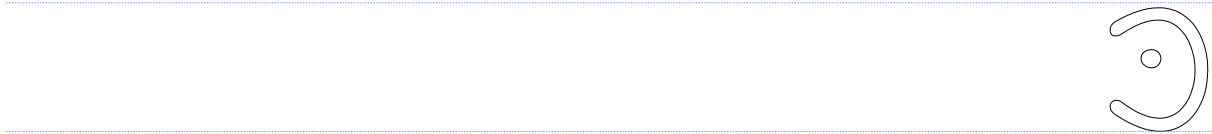
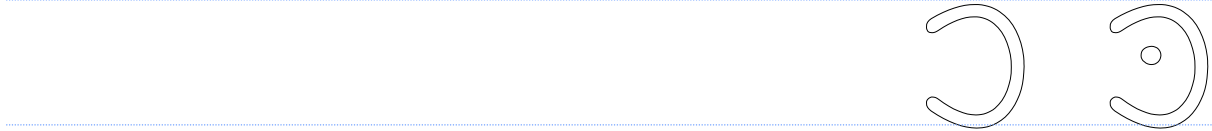
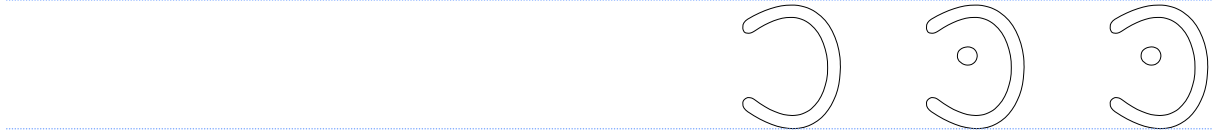
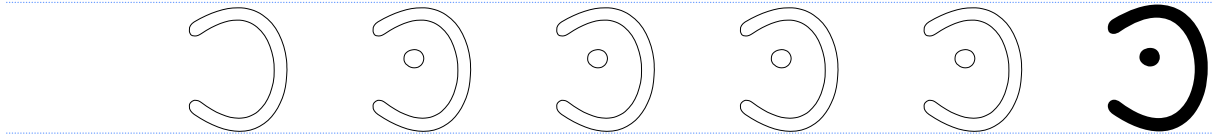
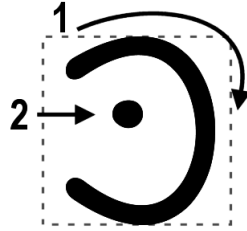
“k” as in kite
no dot – hard “ch” as in bach



Handwriting practice lines for the Hebrew letter Kaf. The first row contains six letters: five hollow outlines for tracing and one solid black letter. The second row contains three hollow outlines for tracing. The third row contains two hollow outlines for tracing. The fourth row contains one hollow outline for tracing. The remaining three rows are empty for independent practice. A vertical pink line is on the right side of the page.

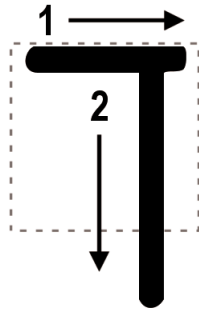
Kaf Writing Practice

“k” as in kite
no dot – hard “ch” as in bach



Final Khaf Writing Practice

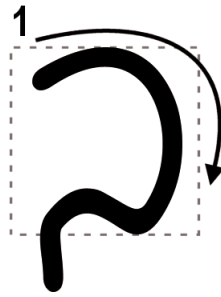
“ch” as in bach



Handwriting practice lines for the final Khaf letter. The page features four rows of horizontal lines. The first row contains four hollow outlines of the letter followed by one solid black outline. The second row contains three hollow outlines. The third row contains two hollow outlines. The fourth row contains one hollow outline. A vertical pink line is positioned on the right side of the page.

Final Khaf Writing Practice

“ch” as in bach



Handwriting practice lines for the final Khaf letter. The page features four rows of horizontal lines. The first row contains five letters: four hollow outlines for tracing and one solid black letter. The second row contains three hollow outlines. The third row contains two hollow outlines. The fourth row contains one hollow outline. A vertical pink line is positioned on the right side of the page.